

Our most advanced way to express milk

Discover comfortable and quicker milk flow



Stimulates the nipple using gentle massaging movements like baby for quicker milk flow, helping mom feel more confident².



Adapts to every nipple* thanks to the collapsing motion, so mom feels more comfortable¹.



Lightweight and quiet design helps mom when she's at work or on-the-go.

Clinically proven effectiveness²

Philips AVENT conducted a community-based clinical study² with lactating mothers, using the new Philips AVENT electric breast pump. Under 50 seconds: Time to milk ejection reflex was significantly reduced with Philips AVENT electric breast pump**.

How moms evaluate the use of the Philips AVENT breast pump:

- Overall effectiveness: 97%,
- Comfort: 97%
- Suction power: 92%

** 48.6 seconds time to MER by double electric breast pump

Ongoing support for you and mom

We offer a range of support material for you and parents, to help moms express with confidence and ease

Support material for mom

Share our range of parent brochures, articles and infant feeding guides with parents to help them through the first few years.

Support material for you

Find out more on the latest infant feeding solutions and research with our range of expert talks, articles, studies and product demonstrations.

Breastfeeding support kit for mom

Discover our complete range of Philips AVENT breastfeeding products to help mom breastfeed for as long as she'd like.

Stay in the know

Sign up online to receive the latest news, events and special midwife offers. Explore more at www.philipsaventforprofessional.com



References:

1. Based on: Mangel et al. Breastfeeding Medicine, 26 april 2019, (109 participants, Israel); Ziemer et al. Journal of Obstetric, Gynecologic & Neonatal Nursing, May 1993, (20 participants (Caucasian), USA); Ramsay et al. 2005, (28 participants, Australia).

2. Based on milk flow initiation time (time to Milk Ejection Reflex - MER) results from clinical trial with 20 participants over a total of 80 expressing sessions (Netherlands, 2019) compared to time to MER results for other Philips predecessor pump technology from Feasibility study with 9 participants (Netherlands, 2018)



PHILIPS

AVENT

For professionals



Spotlight on mom's needs

Whether mom is exclusively breastfeeding or combination feeding,

we want to help her breastfeed for as long as she'd like.

It's why we've spent over 30 years researching what moms need to feel supported when they're breastfeeding. Based on our research, we found that moms are looking for two key things in a breast pump while breastfeeding.



Effectiveness

Quick milk let down and expression helps mom feel confident about producing milk for her baby.

Pumps milk in a similar motion to the baby's sucking

Gently sucks milk, which helps to care for the breasts



Comfort

A soft shield that fits well and gentle suction gives mom a comfortable, positive pumping experience.

The breast cups should be flexible and soft

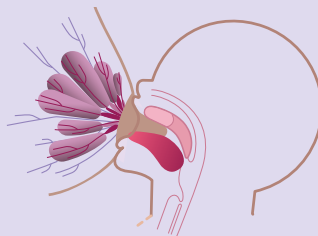
Breasts and nipples come in all shapes and sizes

We studied nipples of lactating women and we know that nipple sizes change throughout breastfeeding and milk expression, making it difficult for mom to find the right size shield. However, by using the correct shield size, mom may experience more comfort during expression.¹

Our physiology-led approach to innovation

We believe that baby is best in class when it comes to drawing out milk. Our extensive research shows that infants use a combination of nipple stimulation with compression, as well as suction, to effectively draw out milk. Current breast pump technology, on the other hand, is limited to just suction.

The natural drinking motion of baby



1

Baby latches onto the nipple.



2

Baby combines suction and peristaltic motion, pressing the nipple against the palate, stimulating the nipple.



3

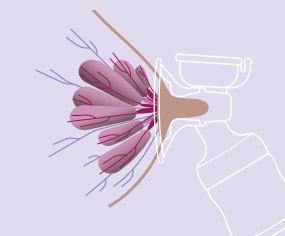
This natural drinking motion stimulates the most optimal milk flow.

Stimulates the nipple like baby

Introducing Natural Motion Technology

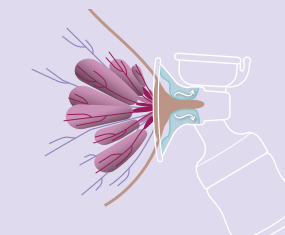
We believe that baby is best in class when it comes to drawing out milk. For over 10 years, we conducted studies on how babies suckle in order to design a revolutionary new product.

The Natural Motion Technology of the pump



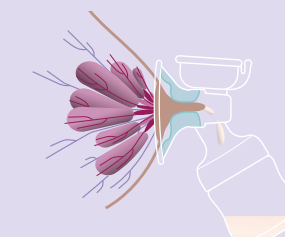
1

Soft shield placed on the breast and nipple.



2

The pump combines suction and peristaltic motion, using gentle massaging movements, like baby.



3

One shield fits 99.98% of nipple sizes*

*Up to 30mm



Our first pump that adapts to mom

Mom only has to use one shield. The shield adapts to any nipple shape thanks to the collapsing motion of the pump, so mom doesn't have to worry about fit.

*Up to 30mm milk flow.