

## Challenges to maternal care



### Maternal mortality

- Maternal mortality is highest among women living in rural areas and underserved communities<sup>1</sup>
- Every day, approximately 830 women worldwide die from preventable causes related to pregnancy or childbirth<sup>1</sup>



### Lack of available caregivers

- Worldwide, low-income and lower-middle-income countries have access to only 29% of obstetricians<sup>2</sup>
- Of the < 1,400 maternal-fetal medicine specialists in the US in 2010, 98% resided in urban areas<sup>3</sup>
- Projected US shortfall of up to 22,000 obstetricians and gynecologists by 2050<sup>4</sup>



### Pandemics pose complications to pregnant women

- Higher risk of severe illness if COVID-19 is contracted<sup>5</sup>
- Increased risk for severe illness compared to non-pregnant women<sup>5</sup>
- Increased risk of adverse pregnancy outcomes such as preterm births<sup>5</sup>

## Tele-ultrasound for easy, live collaboration

Enhance women's healthcare with expanded capabilities through remote clinical guidance.

**100%**

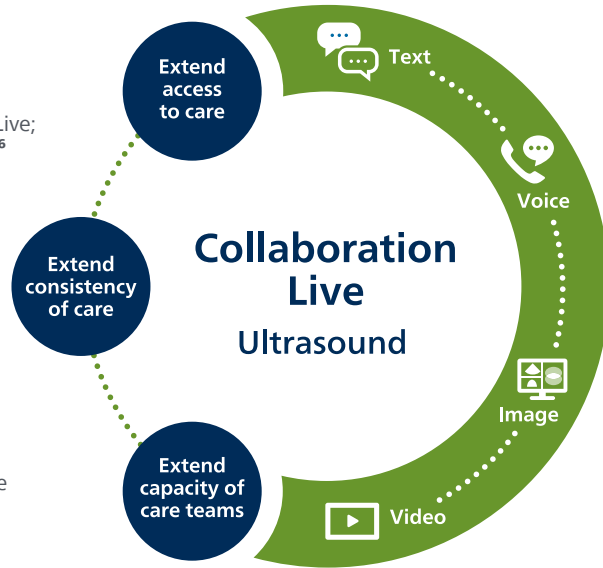
patient satisfaction with quality of care and service provided via Collaboration Live; **100% would use it again**<sup>6</sup>

**100%**

of patients felt Collaboration Live met their healthcare needs<sup>6</sup>

**100%**

of patients felt they had better access to healthcare through tele-ultrasound, including saving time and reducing travel<sup>6</sup>



**100%**

of remote consultations using Collaboration Live were reimbursed<sup>6</sup>

**90%**

of consultations were equivalent to an in person visit, according to a physician assessment, in a 30 patient study<sup>6</sup>

**100%**

of patients felt they experienced a reduction in time and travel when Collaboration Live was used to deliver their healthcare.<sup>6</sup>

## Calculate your potential ROI

### A cost-savings analysis of Collaboration Live found\*

#### Reduce travel

Travel reduced by an average **38 miles per visit** and **29,640 miles per year**



#### Save time during exams

**Nearly 10% time-savings per exam**, compared to face-to-face visit,



for a cost-savings of **\$18,805 yearly**



for a cost-savings of **\$7,280 yearly**



#### Total savings

for an **ROI ratio of 13.41**  
The other published model of a telemedicine tool predicts an ROI of 2.5-3.



**Total yearly cost-savings of \$26,085**

\*A cost-savings analysis of a novel telemedicine tool compared to face-to-face obstetric ultrasound examinations in New Mexico, ISUOG 2021.

## References

1. Maternal Health. Fact sheet of the Pan American Health Organization and the World Health Organization. <https://www.paho.org/en/topics/maternal-health>. Accessed August 25, 2021.
2. Holmer H, et al. Global distribution of surgeons, anaesthesiologists, and obstetricians. *The Lancet*. 27 Apr. 2015. [www.thelancet.com/journals/langlo/article/PIIS2214-109X\(14\)70349-3/fulltext#sec1](http://www.thelancet.com/journals/langlo/article/PIIS2214-109X(14)70349-3/fulltext#sec1). Accessed August 25, 2021.
3. Rayburn W, et al. Maternal-fetal workforce in the United States. *American Journal of Obstetrics & Gynecology Supplement*. January 2011. [www.ajog.org/action/showPdf?pii=S0002-9378%2810%2901902-2](http://www.ajog.org/action/showPdf?pii=S0002-9378%2810%2901902-2). Accessed August 25, 2021.
4. 2019 OB-GYN Workforce Study: 2019 ob-gyn workforce study: physician shortages contribute to women's health crisis. *Doximity*, Sept. 2019. [s3.amazonaws.com/s3.doximity.com/press/2019\\_ob\\_gyn\\_workforce\\_study.pdf](https://s3.amazonaws.com/s3.doximity.com/press/2019_ob_gyn_workforce_study.pdf). Retrieved March 30, 2021.
5. Centers for Disease Control and Prevention. Considerations for Inpatient Obstetric Healthcare Settings. Updated 1 Dec. 2020, [www.cdc.gov/coronavirus/2019-ncov/hcp/inpatient-obstetric-healthcare-guidance.html](http://www.cdc.gov/coronavirus/2019-ncov/hcp/inpatient-obstetric-healthcare-guidance.html). Accessed August 25, 2021.
6. Ruma M, et al. The use of a novel telemedicine tool. October, 2020.

Collaboration Live for diagnostic use is not available in all countries.

